



# 2021 BOND PROGRAM UPDATE



Presented to:  
Redford Union  
School District  
March 13, 2023



TRADITION-RICH, FUTURE-FOCUSED



# 2021 BOND PROGRAM UPDATE

## AGENDA

- Hilbert RUSD Track Report
  - Technical Compliance
  - Outside Third-Party Reviews
  - Aesthetic Concerns
  - Next Steps



TRADITION-RICH, FUTURE-FOCUSED

# TRACK SURFACE DEPRESSIONS

A site walk was performed on 10-21-2022 to review the track surface. During this meeting a one-meter aluminum level was used to span across noted depressions (as seen in the photos here). A thin calibrated wedge was used to measure the depth of noted depressions in the track surface.

## Technical Standards

- 8-10 locations were measured and observed
- The specifications used for this project reference the latest version of the ASTM 2157-19 standard approved in 2018.
- There shall be no depressions or bumps beneath a three-meter straightedge greater than 6mm in depth for Class A and Class B surface or 8mm for Class C.
- Depressions beneath a 1-meter straightedge shall not exceed 3mm for Class A and Class B surface or 4mm for Class C.

## Observed Conditions

- 8-10 different depressions observed were measured.
- One area noted in the 10-31-2022 field report having a depth greater than 5mm but no greater than 9mm. This area as noted is scheduled for repair work in 2023.
- Several other depressions were measured with depths ranging from 1mm to 3mm across the 1 meter straightedge.



# ADDITIONAL DEPTH SAMPLING REPORT

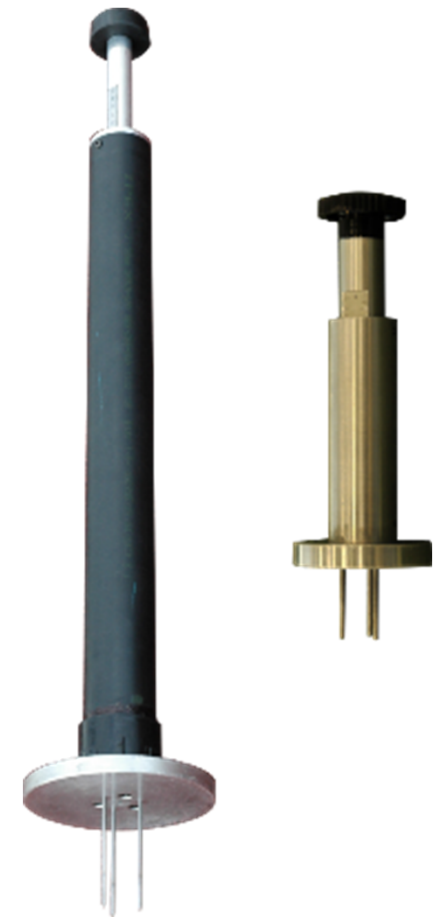
PMC organized additional on-site samplings of the Redford Track at Hilbert. 96 additional depths were sampled using the Floor-Test FT150 tool on 02/10/2023. Members of French Associates and Foresite Design were present to conduct this test.

## Technical Standards

- The specifications used for this project reference the latest version of the ASTM F 2157-02 standard approved in 2018.
- Per design specifications, the average surface depth shall be no less than 12mm.
- Per ASTM F 2157-02 stipulates a minimum depth of 10mm.

## Observed Conditions

- Track depths were recorded at sixty-foot intervals around the track (total of 96 samples were recorded).
- The average surface depth based on the 96 samples is 14.75mm.
- No depths were measured less than 10mm.





# 2021 BOND PROGRAM UPDATE

## AGENDA

- Hilbert RUSD Track Report
- Technical Compliance
- Outside Third-Party Reviews
- Aesthetic Concerns
- Next Steps



TRADITION-RICH, FUTURE-FOCUSED

February 8, 2023

Mr. Jasen Witt

Superintendent

Mr. Mike Beltinck

Chief Financial Officer

**Redford Union School District**

17715 Brady Street

Redford, MI 48240

**RE: Redford Union School District 2021 Bond Projects  
3<sup>rd</sup> Party Observation of Hilbert Track**

Dear Mr. Witt & Mr. Beltinck,

This memorandum is to capture the discussions and review of the Hilbert track with regards to quality and usability. The Christman Company invited Tim Gerrits who is a current board member of the American Sports Builder Association (ASBA). He has vast experience with track installations and provides a wealth of knowledge on track construction.

A site walk was conducted on 2.8.23 at 10:30am to observe the quality of Hilbert Track installation. During this walk, the group (including Mr. Gerrits) observed the entire track installation with a specific focus on seams, rubber texture, and levelness. With regard to the levelness and rubber texture that were observed, he had no concerns with athlete performance or track quality based on these factors.

It was agreed that the one area, as noted in the track punchlist, will need to be addressed. Tim also mentioned that the seams and patches would fade over time naturally. Alternatively, Tim offered a possible immediate solution to remedy the aesthetic appearance of the seams on the track with the use of a structural overspray.

Overall, Tim's impression was that the track meets quality standards and there were no serious issues that would warrant a full replacement.

February 28, 2023

Mr. Jasen Witt

Superintendent

Mr. Mike Beltinck

Chief Financial Officer

**Redford Union School District**

17715 Brady Street

Redford, MI 48240

**RE: Redford Union School District 2021 Bond Projects  
Goddard Coatings Site Observation of Hilbert Track**

Dear Mr. Witt & Mr. Beltinck,

This memorandum is to capture the discussions and review of the Hilbert track with regards to quality and usability. The Christman Company invited Jake Vaughn who is the President of Goddard Coatings. Goddard Coatings has been installing track surfacing throughout southeastern Michigan for 35 years.

A site walk with Superintendent Witt and Jake was conducted on 02.13.23 at 10:00am to observe the quality of Hilbert Track installation. During this walk the team observed the entire track installation with a specific focus on seams, rubber texture, levelness, and overall installation quality.

Jake agreed that the one area, as noted in the track punchlist, will need to be addressed. During the site visit Jake mentioned that the seams that were observed aligned with industry standards and his company would have produced similar seams if they were performing the work. Jake had no concerns of the texture of the rubber surface as it relates to the quality of the track.

Overall, Jake found nothing out of the ordinary, and believed this track installation to be on par with typical track installations.



# 2021 BOND PROGRAM UPDATE

## AGENDA

Hilbert RUSD Track Report

- Technical Compliance
- Outside Third-Party Reviews
- Aesthetic Concerns
- Next Steps



TRADITION-RICH, FUTURE-FOCUSED



Matrix of Observed Conditions – Additional Tracks Surveyed

		Observed Imperfections				
		Uneven Surfaces	Surface Patches	Seams & Joint Lines	Surface Irregularities	Varied Edge Thicknesses
School Location	North School	✓	✓	✓	✓	✓
	South School	✓	✓		✓	✓
	West School	✓		✓	✓	
	North West School	✓	✓	✓	✓	
	Far West School		✓	✓		✓

Uneven Surfaces



Redford Union



North West School



North West School



South School



North School



North School

Patching Areas



Redford Union



North West School



North School



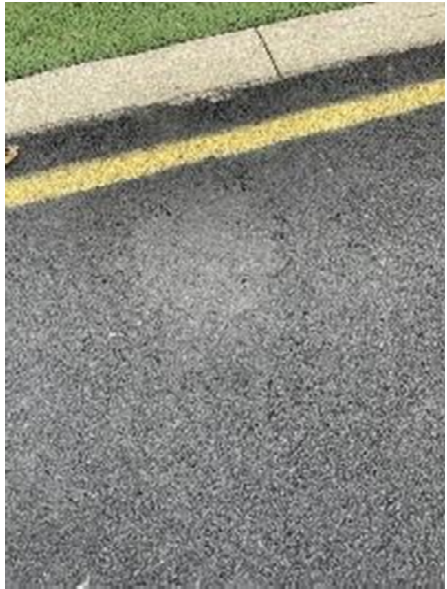
South School



South School



Far West School



North West School

Seams (joint) Lines



Redford Union



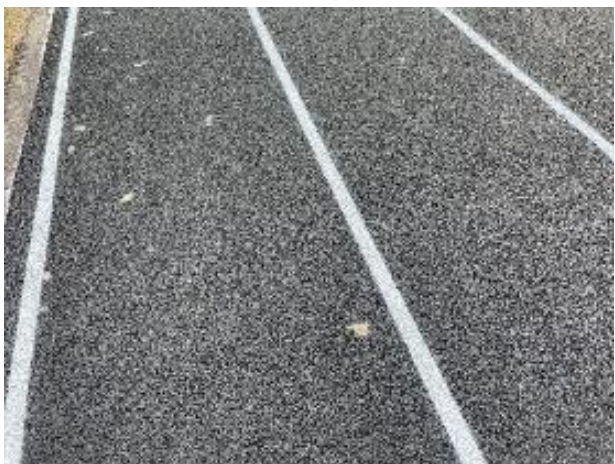
North School



West School



Far West School

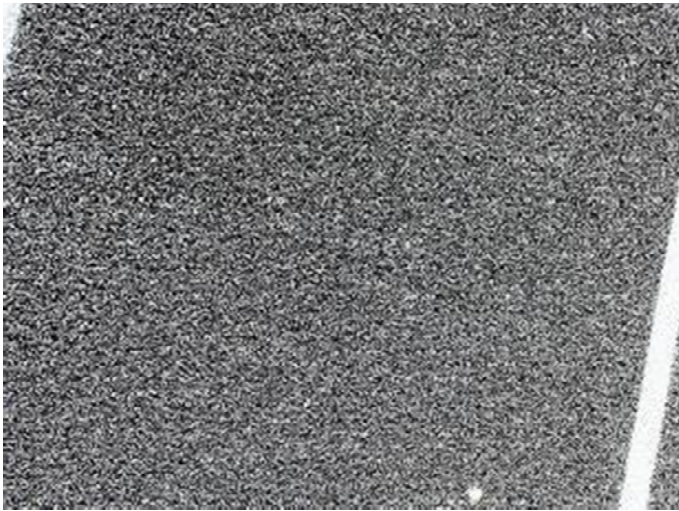


North School



West School

Surface Texture Inconsistencies



Redford Union



South School



North School



South School

Varied Edge Conditions



Redford Union



Far West School



South School



North School



# 2021 BOND PROGRAM UPDATE

## AGENDA

Hilbert RUSD Track Report

- Technical Compliance
- Outside Third-Party Reviews
- Aesthetic Concerns
- Next Steps



TRADITION-RICH, FUTURE-FOCUSED

**See Presentation from Collins & Blaha**





# 2021 BOND PROGRAM UPDATE



## Questions & Discussion



TRADITION-RICH, FUTURE-FOCUSED