



2021 BOND PROGRAM UPDATE



Presented to:
Redford Union
School District
March 14, 2022



TRADITION-RICH, FUTURE-FOCUSED



2021 BOND PROGRAM UPDATE

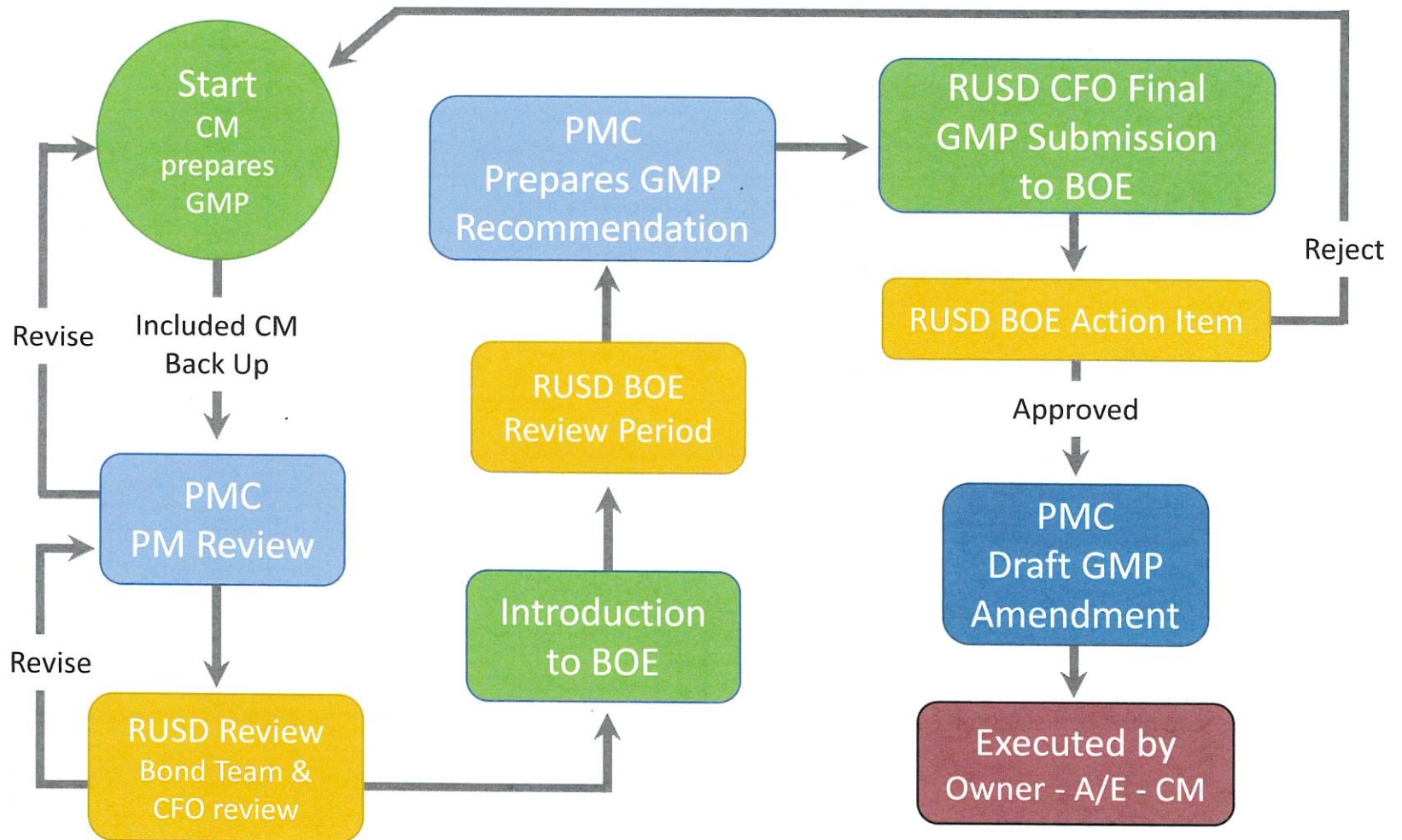
AGENDA

- BOE Communication Plan
- Kitchen Fund – Design Update
- CTE Focus Planning



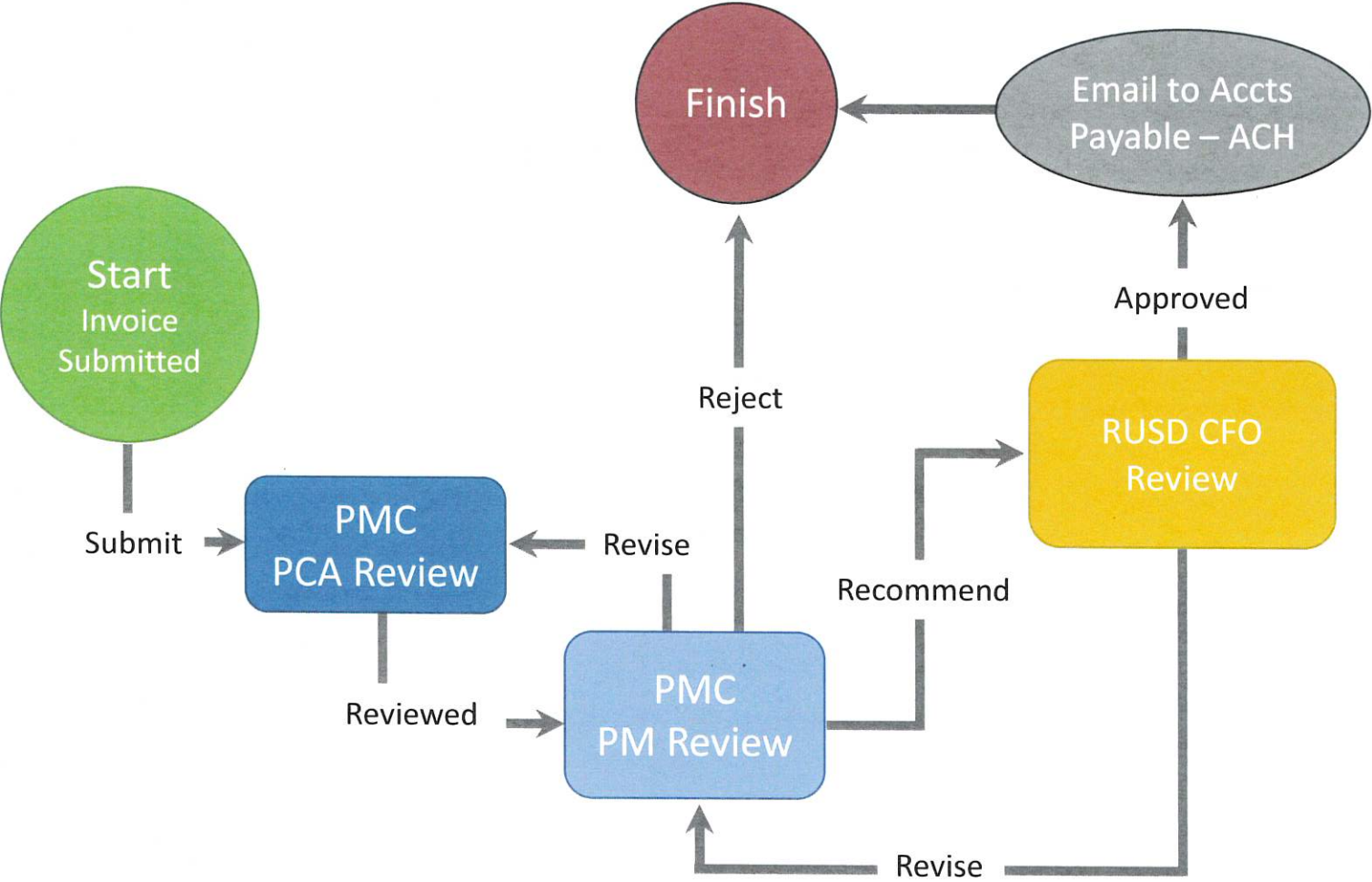
TRADITION-RICH, FUTURE-FOCUSED

Guaranteed Maximum Price (GMP) Review Process



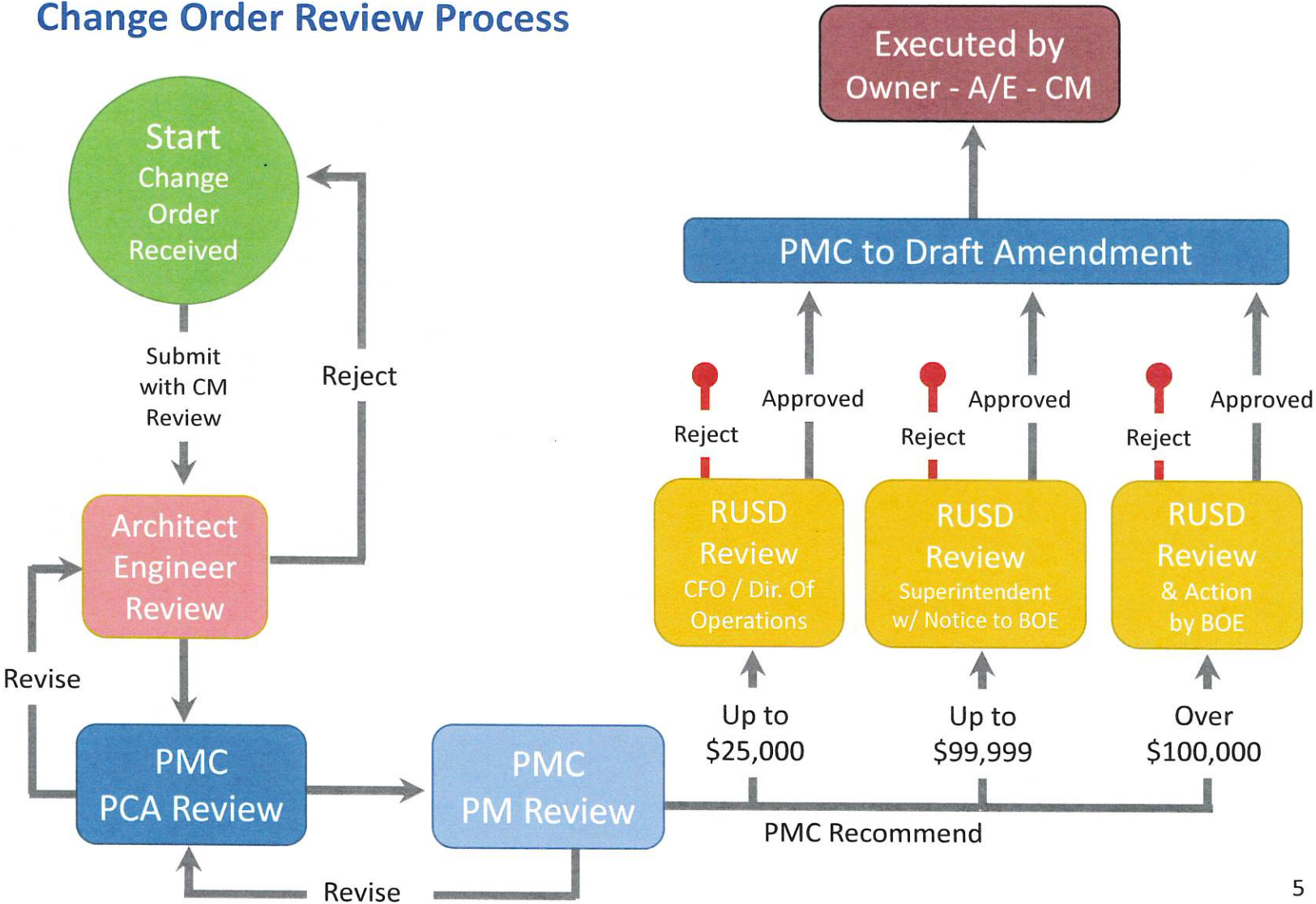


Invoice Processing Flow Chart





Change Order Review Process





2021 BOND PROGRAM UPDATE



AGENDA

- BOE Communication Plan
- Kitchen Fund – Design Update
- CTE Focus Planning

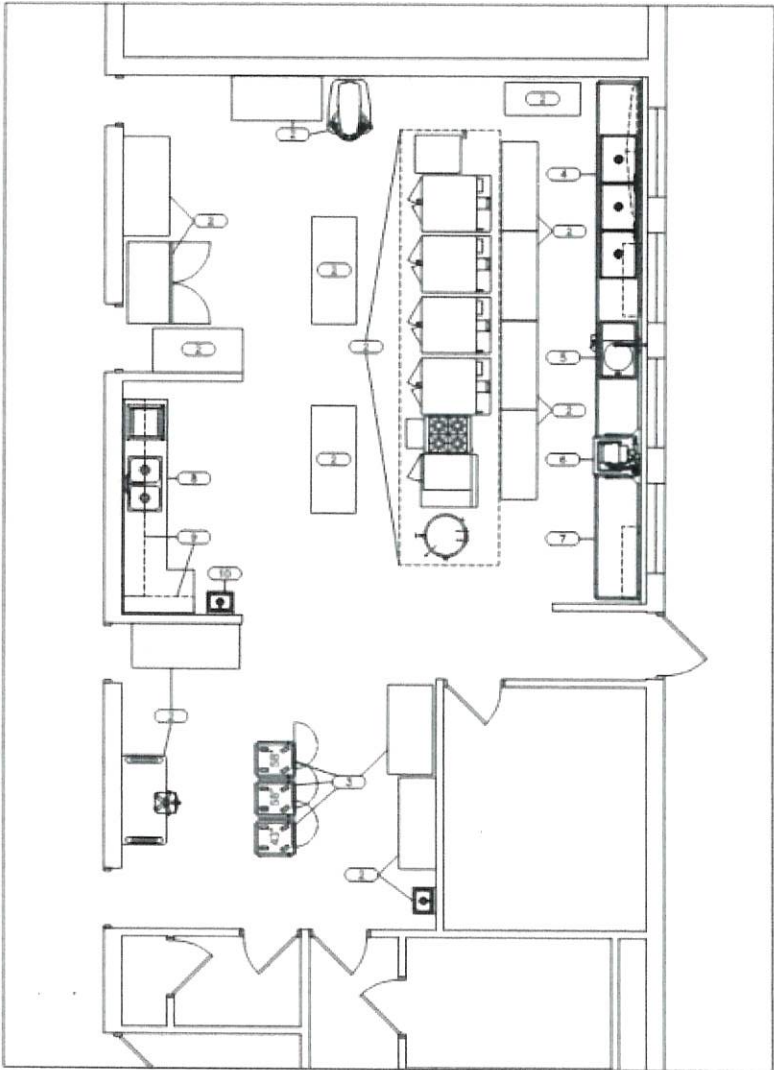


TRADITION-RICH, FUTURE-FOCUSED



Beech Kitchen Plan

- 1. Provide new ware washing area
- 2. Adjust existing warming equipment
- 3. Reconfigure 3 compartment sink area to include waste system
- 4. Provide new worktable area for food preparation



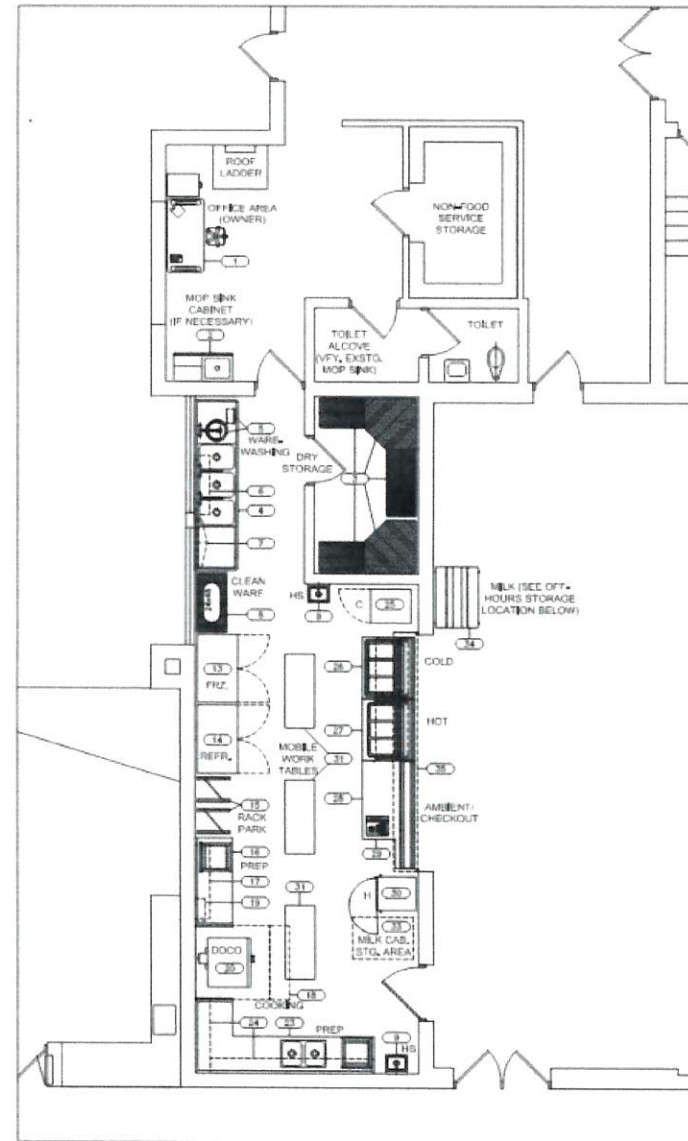
Proposed Layout

KITCHEN FUND – DESIGN UPDATE



Keeler Kitchen Plan

1. Create New Serving Line
2. Update 3 compartment sinks
3. Provide new warming area and equipment
4. Provide new shelving and racking
5. Add refrigeration and mobile milk cooler
6. Add ware washing station
7. New Door into gym area
8. Rework counter and roll up enclosure
9. Provide new ventilation per code
10. Add exhaust system per code
11. Update Fire Suppression per code



Floor Plan



2021 BOND PROGRAM UPDATE

AGENDA

- BOE Communication Plan
- Kitchen Fund – Design Update
- CTE Focus Planning



TRADITION-RICH, FUTURE-FOCUSED



Focus on CTE programs

1. Currently planning renovations for CTE-eligible programs (auto shop and early childhood)
2. Additional planning to be undertaken for 2-3 additional CTE programs - either via on-site facilities (Secondary Campus Addition) or via High Education or Business/Trade Partners



Next Steps

1. Create ad-hoc stakeholder groups to develop options
2. Seek stakeholder interest, input, and feedback relative to additional CTE-eligible programs (using surveys, meetings, etc.)
3. Establish who partners might be
4. Meet with partners for consideration of the following items
 - A. Program requirements
 - B. College credit if applicable
 - C. Program needs in the secondary campus
 - D. Equipment, staffing, training, and/or funding support for respective CTE programs





2021 BOND PROGRAM UPDATE



Questions & Discussion



TRADITION-RICH, FUTURE-FOCUSED